

Ingredients & Finished Goods

PET CATALOG

We're uniting
scientific excellence
with world-class service
to unleash the
potential of
cannabinoids

Join us.



OPEN BOOK EXTRACTS



Table of Contents

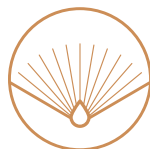
P4 - How Do Cannabinoids Help Pets?

P5 - How OBX Supports Pet Product Development

P6 - Product Offerings:

- Tinctures
- Soft Chews
 - Grain Free Plain+Jane Broad Spectrum Hemp Chews
 - Gluten Free Hemp+Shroom Broad Spectrum Immunity Hemp Chews
 - Grain Free Chill+Out Broad Spectrum Calming Hemp Chews
 - Grain Free Hemp+Joint Broad Spectrum Mobility Hemp Chews
- Oral Strips

P18 - CEO Note



How Do Cannabinoids Help Pets?

Cannabinoids like CBD work by interacting with something called the Endocannabinoid System. The Endocannabinoid System plays a role in regulating our mood, physiology, pain, inflammatory response, and other functions throughout the day. Our pets have an Endocannabinoid System too!

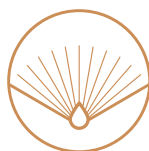
- CBD can help your pet by supporting normal cardiovascular, immune, and neurological functions (1)
- If your pet struggles with occasional or seasonal allergies, CBD can help soothe skin-related issues and support skin health (2)
- It can reduce the effects of environmental stress by promoting relaxation and having a calming effect on the nerves (3)
- CBD supports a normal inflammatory response, which can help with occasional discomfort, joint stiffness, and soreness (4)

(1) [Review of the neurological benefits of phytocannabinoids - Joseph Maroon, Jeff Bost](#)

(2) [Cannabinoid Signaling in the Skin: Therapeutic Potential of the “C\(ut\)annabinoid” System - Kinga Toth, Dorottya Adam, Tamas Biro, Attila Olah](#)

(3) [Cannabidiol as a Potential Treatment for Anxiety Disorders - Esther Blessing, Maria Steenkamp, Jorge Manzanares, Charles Marmar](#)

(4) [Immune Responses Regulated by Cannabidiol - James Nichols and Barbara Kaplan](#)



We're purists at heart

OBX's cannabinoids & hemp derived ingredients are refined from hemp genetics grown for OBX by a network of carefully vetted farmers across North Carolina and Virginia. All extraction and processing is completed at our food-grade cGMP-certified 76,000 square-foot facility in Roxboro, NC.

We track and record product flow through the complete life-cycle. All products are tested internally during production and then by licensed third-party laboratories to ensure the quality and compliance with applicable state and federal regulations.



NASC: OBX is one of the only CBD suppliers in the world to receive NASC (National Animal Supplement Council) Accreditation, and is an NASC preferred supplier.



OBX Senior Formulation Scientist, Trevor Gentry PhD: OBX's Head Formulation Scientist is a PhD Food Scientist with published research from Cornell University, and 20+ years product development & formulation expertise for Hill's Pet Nutrition and Givaudan Flavors.



Givaudan





Product Offerings

Open Book Extracts is proud to unveil our lineup of cannabinoid-infused finished goods, ready to deliver to your customers. From formulation through packaging, our team has created a portfolio of innovative and efficacious products, crafted from the finest, high-quality OBX cannabinoid ingredients.





WHITE LABEL CBD PET TINCTURES

Our **Full spectrum CBD** oil contains all the same cannabinoids and compounds found in the hemp plant. With more than 100 different cannabinoids naturally present in the hemp plant, full spectrum oil enables what is commonly referred to as the 'entourage effect', or the therapeutic impact of these cannabinoids interacting with each other. This wholesale full spectrum CBD oil also retains other beneficial aspects of the plant, such as essential vitamins, minerals, fatty acids, protein, chlorophyll, terpenes, flavonoids, and fiber.

Our **T-Free Broad Spectrum** oil is a refined version of the full-spectrum extract. All of the therapeutic compounds found in the full-spectrum oil are preserved. We then remove the THC molecule completely. This extract delivers enhanced therapeutic benefits without the risk of psychoactive effects of THC.

With 300-1,500mg per one-ounce bottle, each serving delivers 10-50mg/mL of CBD derived from 100% US grown Hemp. Serving size is 1 dropper (1 mL) with 30 servings per bottle.



- **Strengths:** 10-50mg/mL | 300-1,500mg/bottle
- **Active Ingredients:** T-Free Broad Spectrum or Full Spectrum
- **Other Ingredients:** MCT Oil, Natural Flavoring, Sweetener
- **Pet Flavors:** Natural, Peanut Butter, Rotisserie Chicken, Roasted Salmon
- **Formula Appearance:** Clear, very slight yellow tint
- **Formula Density (@25C):** 0.94 - 0.96 g/mL
- **Primary Packaging Dimensions:** 1.2" x 1.2" x 3.1" (w/o carton)

- **Product Net Contents:** 1froz (29.5mL)
- **Product Net Weight:** 0.99 oz
- **Product Gross Weight:** 2.75 oz
- **Master Case Dimensions:** 10.31" x 6.31" x 4.63"
- **Bottles/Case:** 40
- **Master Case Gross Weight:** 7.13 lb
- **Cases/Pallet:** Up to 252
- **Minimum Order Quantity:** 1,500 Units
- **Recommended Storage Temp:** 68-75° F (20-25° C)
- **Shelf Life:** 12 Months

BOTTLE INFORMATION

- 1oz, 30mL Amber Glass Boston Round Bottle with Child Resistant Glass Dropper
- Black Graduated Dropper
- Sheer Shrink Sleeve Neck Band
- Batch Code Identifier



1000MG TINCTURE PRICING : 30ML BOTTLE

MOQ	1,500-4,999	5,000-9,999	10,000+
T-FREE BROAD SPECTRUM	\$7.25	\$7.00	\$6.75
FULL SPECTRUM	\$6.25	\$6.15	\$6.00

LABEL GUIDELINES

SUPPLEMENT FACTS

1 Full Dropper: 1ml = 33mg CBD

Ingredients: *Caprylic/Capric Triglyceride (MCT Fractionated Coconut Oil), *Phytocannabinoid - rich Hemp

*Certified Organic Ingredient

Lab Tested
View Results Here

Your Brand Here

PREMIUM HEMP EXTRACT

Broad Spectrum
Your Flavor Here

1000mg
33mg Per Dropper

1OZ / 30ML

Suggested Use:
Adults take 1 to 2 full droppers.
Shake well before using.
FDA has not evaluated this product for safety or efficacy.
Not to be used during pregnancy or lactation. If you take pharmaceutical drugs or have a health condition, consult physician prior to use.
Keep out of reach of children.

Your Social | YourWebsiteURL.com
Distributed By: Company Name
Address Street, City, State, Zip

Label Guideline Information:

- Bleedline
- Dieline
- - - Safety Area

Label Print Information:

Size: H: 1.693" X W: 3.803"

Lamination/Coating: Matte Lamination or (Gloss)



WHITE LABEL HIP & JOINT CBD SOFT CHEWS

Water soluble functional soft chews perfect for all sized dogs and cats. Features Broad-Spectrum PCR Water Soluble Hemp actives to ensure maximum absorption and value.



Non-detectable THC



Cruelty Free



Veterinarian Formulated



Pharmaceutical grade
Water-Soluble CBD



GMO Free



Veterinarian Approved



Nano-sized Micro-Emulsion
Platform Delivery System



Grain Free



USA Organically
Farmed Hemp

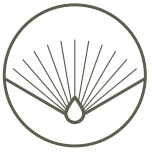
- **Strengths:** 2mg per Chew
- **Active Ingredients:** Glucosamine 500mg, MSM 250mg, Yucca 250mg, Chondroitin 120mg, Ascorbic Acid 50 mg, Hyaluronic Acid 5mg
- **Other Ingredients:** Ascorbic Acid, Beef Liver, Calcium Propionate, Coconut Flour, Flax Oil, Gelatin, Glycerin, Liquid Smoke, Mixed Tocopherols, Natural Bacon Flavor, Sunflower Lecithin, Sweet Potato Powder, Tapioca Flour, Water
- **Flavors:** Beef (*Offer additional custom flavoring options)
- **Soft Chew Mass:** 4.5g
- **Soft Chew Dimensions:** 0.5" x 0.5" x 0.5"
- **Packaging Dimensions:** Information on next page

- **Product Net Contents:** 30ct, 60ct, Bulk
- **Product Net Weight:** TBD
- **Product Gross Weight:** TBD
- **Master Case Dimensions:** TBD
- **Products/Master Case:** TBD
- **Master Case Gross Weight:** TBD
- **Cases/Pallet:** TBD
- **Minimum Order Quantity:** 10,000 Packets
- **Recommended Storage Temp:** 68-75° F (20-25° C)
- **Shelf Life:** 12 Months

HIP & JOINT CBD SOFT CHEW PRICE PER UNIT

	Chew Quantity				Premium, Bag	Jar, Lid	Jar, Lid, Label	Bag Label
	120,000	360,000	600,000	960,000				
BEEF					ADD	ADD	ADD	(Applied, F&B) ADD
30CT	\$3.55	\$3.50	\$3.35	\$3.30	\$0.05	\$0.50	\$0.75	\$0.15
60CT	\$6.53	\$6.41	\$6.14	\$6.05	\$0.05	\$0.70	\$0.90	\$0.15
BULK*	\$100.49	\$98.67	\$94.51	\$92.82	-	-	-	-

*10lb bag, approx 1,000 chews



PACKAGING INFORMATION

JAR WITH LID



Label Guideline Information:

- Bleedline
- Dieline
- - - - - Safety Area

Label Print Information:

Size: H: 1.643" X W: 7.443"

Lamination/Coating: Matte Lamination or (Gloss)

*Ask Sales Rep for Label Template

- Amber PET cylindrical jar with black threaded closure and tamper seal
- Batch Code Identifier

BAG WITH LABEL

- Bag information needed
- Batch Code Identifier



Label Guideline Information:

- Bleedline
- Dieline
- - - - - Safety Area

Label Print Information:

25mg Size: Coming Soon

Lamination/Coating: Coming Soon

*Ask Sales Rep for Label Template



WHITE LABEL SKIN & COAT CBD SOFT CHEWS

Water soluble functional soft chews perfect for all sized dogs and cats. Features Broad-Spectrum PCR Water Soluble Hemp actives to ensure maximum absorption and value.



Non-detectable THC



Cruelty Free



Veterinarian Formulated



Pharmaceutical grade Water-Soluble CBD



GMO Free



Veterinarian Approved



Nano-sized Micro-Emulsion Platform Delivery System



Grain Free



USA Organically Farmed Hemp

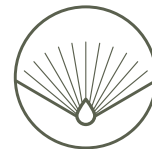
- **Strengths:** 2mg per Gummy
- **Active Ingredients:** Wild Alaskan Salmon Oil 100mg, Omega-3 100 mg (from salmon 7 flax), Biotin 5mg
- **Other Ingredients:** Ascorbic Acid, Beef Liver, Calcium Propionate, Coconut Flour, Flax Oil, Gelatin, Glycerin, Liquid Smoke, Mixed Tocopherols, Natural Bacon Flavor, Sunflower Lecithin, Sweet Potato Powder, Tapioca Flour, Water
- **Flavors:** Beef (*Offer additional custom flavoring options)
- **Soft Chew Mass:** 4.5g
- **Soft Chew Dimensions:** 0.5" x 0.5" x 0.5"
- **Packaging Dimensions:** Information on next page

- **Product Net Contents:** 30ct, 60ct, Bulk
- **Product Net Weight:** TBD
- **Product Gross Weight:** TBD
- **Master Case Dimensions:** TBD
- **Products/Master Case:** TBD
- **Master Case Gross Weight:** TBD
- **Cases/Pallet:** TBD
- **Minimum Order Quantity:** 10,000 Packets
- **Recommended Storage Temp:** 68-75° F (20-25° C)
- **Shelf Life:** 12 Months

SKIN & COAT CBD SOFT CHEW PRICE PER UNIT

	Chew Quantity				Premium, Bag	Jar, Lid	Jar, Lid, Label	Bag Label
	120,000	360,000	600,000	960,000				
BEEF					ADD	ADD	ADD	(Applied, F&B) ADD
30CT	\$3.24	\$3.19	\$3.06	\$3.30	\$0.05	\$0.50	\$0.75	\$0.15
60CT	\$5.88	\$5.77	\$5.54	\$5.43	\$0.05	\$0.70	\$0.90	\$0.15
BULK*	\$89.83	\$88.01	\$84.50	\$82.81	-	-	-	-

*10lb bag, approx 1,000 chews



PACKAGING INFORMATION

JAR WITH LID



SUPPLEMENT FACTS

1 Soft Chew: 2mg CBD

Ingredients: Wild Alaskan Salmon Oil 100mg, Omega-3 100 mg (from salmon), 7 flax, Biotin 5mg, Ascorbic Acid, Beef Liver, Calcium Propionate, Coconut Flour, Flax Oil, Gelatin, Glycerin, Mixed Tocopherols, Sweet Potato Sunflower Lecithin, Tapioca Flour

Suggested User: Adults take 1 to 2 gems every 6 hours or as desired.
FDA has not evaluated this product for safety or efficacy. Not to be used during pregnancy or lactation. If you take pharmaceutical drugs or have a health condition, consult physician prior to use.
Keep out of reach of children.

Your Social | YourWebsiteURL.com
Distributed By: Company Name, Address Street, City, State, Zip
Lab Tested View Results Here

Label Guideline Information:

- Bleedline
- Dieline
- - - - - Safety Area

Label Print Information:

Size: H: 1.643" X W: 7.443"

Lamination/Coating: Matte Lamination or (Gloss)

*Ask Sales Rep for Label Template

- Amber PET cylindrical jar with black threaded closure and tamper seal
- Batch Code Identifier

BAG WITH LABEL

- Bag information needed
- Batch Code Identifier



Label Guideline Information:

- Bleedline
- Dieline
- - - - - Safety Area

Label Print Information:

25mg Size: Coming Soon

Lamination/Coating: Coming Soon

*Ask Sales Rep for Label Template



WHITE LABEL CALM CBD SOFT CHEWS

Water soluble functional soft chews perfect for all sized dogs and cats. Features Broad-Spectrum PCR Water Soluble Hemp actives to ensure maximum absorption and value.



Non-detectable THC



Cruelty Free



Veterinarian Formulated



Pharmaceutical grade Water-Soluble CBD



GMO Free



Veterinarian Approved



Nano-sized Micro-Emulsion Platform Delivery System



Grain Free



USA Organically Farmed Hemp

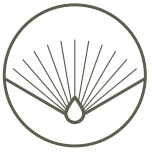
- **Strengths:** 2mg per Gummy
- **Active Ingredients:** Magnesium Sulfate 200mg, Thiamine B1 125mg, Inositol 125mg, Chamomile 50 mg, Ginger 50 mg, Valerian 25mg, Ashwagandha 25mg, Tryptophan 25mg
- **Other Ingredients:** Ascorbic Acid, Beef Liver, Calcium Propionate, Coconut Flour, Flax Oil, Gelatin, Glycerin, Liquid Smoke, Mixed Tocopherols, Natural Bacon Flavor, Sunflower Lecithin, Sweet Potato Powder, Tapioca Flour, Water
- **Flavors:** Beef (*Offer additional custom flavoring options)
- **Soft Chew Mass:** 4.5g
- **Soft Chew Dimensions:** 0.5" x 0.5" x 0.5"
- **Packaging Dimensions:** Information on next page

- **Product Net Contents:** 30ct, 60ct, Bulk
- **Product Net Weight:** TBD
- **Product Gross Weight:** TBD
- **Master Case Dimensions:** TBD
- **Products/Master Case:** TBD
- **Master Case Gross Weight:** TBD
- **Cases/Pallet:** TBD
- **Minimum Order Quantity:** 10,000 Packets
- **Recommended Storage Temp:** 68-75° F (20-25° C)
- **Shelf Life:** 12 Months

CALM CBD SOFT CHEW PRICE PER UNIT

	Chew Quantity				Premium, Bag	Jar, Lid	Jar, Lid, Label	Bag Label
	120,000	360,000	600,000	960,000				
BEEF					ADD	ADD	ADD	(Applied, F&B) ADD
30CT	\$3.52	\$3.47	\$3.33	\$3.28	\$0.05	\$0.50	\$0.75	\$0.15
60CT	\$6.45	\$6.34	\$6.07	\$5.98	\$0.05	\$0.70	\$0.90	\$0.15
BULK*	\$99.32	\$97.50	\$93.47	\$91.78	-	-	-	-

*10lb bag, approx 1,000 chews



PACKAGING INFORMATION

JAR WITH LID



SUPPLEMENT FACTS

1 Soft Chew: 2mg CBD

Ingredients: Magnesium Sulfate 200mg, Thiamine B1 125mg, Inositol 125mg, Chamomile 50 mg, Ginger 50 mg, Valerian 25mg, Ashwagandha 25mg, Tryptophan 2 5mg, Ascorbic Acid, Beef Liver, Calcium Propionate, Coconut Flour, Flax Oil, Gelatin, Glycerin, Mixed Tocopherols, Sweet Potato Sunflower Lecithin, Tapioca Flour

Suggested User: Adults take 1 to 2 gems every 6 hours or as desired.

FDA has not evaluated this product for safety or efficacy. Not to be used during pregnancy or lactation. If you take pharmaceutical drugs or have a health condition, consult physician prior to use. Keep out of reach of children.

Your Social | YourWebsiteURL.com
Distributed By: Company Name, Address Street, City, State, Zip

Lab Tested
View Results
Here

Label Guideline Information:

- Bleedline
- Dieline
- - - - - Safety Area

Label Print Information:

Size: H: 1.643" X W: 7.443"

Lamination/Coating: Matte Lamination or (Gloss)

*Ask Sales Rep for Label Template

- Amber PET cylindrical jar with black threaded closure and tamper seal
- Batch Code Identifier

BAG WITH LABEL

- Bag information needed
- Batch Code Identifier



Label Guideline Information:

- Bleedline
- Dieline
- - - - - Safety Area

Label Print Information:

25mg Size: Coming Soon

Lamination/Coating: Coming Soon

*Ask Sales Rep for Label Template



WHITE LABEL CBD SOFT CHEWS

Water soluble functional soft chews perfect for all sized dogs and cats. Features Broad-Spectrum PCR Water Soluble Hemp actives to ensure maximum absorption and value.



Non-detectable THC



Cruelty Free



Veterinarian Formulated



Pharmaceutical grade Water-Soluble CBD



GMO Free



Veterinarian Approved



Nano-sized Micro-Emulsion Platform Delivery System



Grain Free



USA Organically Farmed Hemp

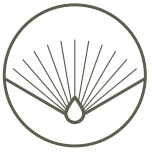
- **Strengths:** 2mg per Gummy
- **Active Ingredients:** CBD
- **Other Ingredients:** Ascorbic Acid, Beef Liver, Calcium Propionate, Coconut Flour, Flax Oil, Gelatin, Glycerin, Liquid Smoke, Mixed Tocopherols, Natural Bacon Flavor, Sunflower Lecithin, Sweet Potato Powder, Tapioca Flour, Water
- **Flavors:** Beef (*Offer additional custom flavoring options)
- **Soft Chew Mass:** 4.5g
- **Soft Chew Dimensions:** 0.5" x 0.5" x 0.5"
- **Packaging Dimensions:** Information on next page

- **Product Net Contents:** 30ct, 60ct, Bulk
- **Product Net Weight:** TBD
- **Product Gross Weight:** TBD
- **Master Case Dimensions:** TBD
- **Products/Master Case:** TBD
- **Master Case Gross Weight:** TBD
- **Cases/Pallet:** TBD
- **Minimum Order Quantity:** 10,000 Packets
- **Recommended Storage Temp:** 68-75° F (20-25° C)
- **Shelf Life:** 12 Months

CBD SOFT CHEW PRICE PER UNIT

	Chew Quantity				Premium, Bag	Jar, Lid	Jar, Lid, Label	Bag Label
	120,000	360,000	600,000	960,000				
BEEF					ADD	ADD	ADD	(Applied, F&B) ADD
30CT	\$2.96	\$2.91	\$2.80	\$2.74	\$0.05	\$0.50	\$0.75	\$0.15
60CT	\$5.34	\$5.21	\$5.04	\$4.94	\$0.05	\$0.70	\$0.90	\$0.15
BULK*	\$80.73	\$78.91	\$75.92	\$74.36	-	-	-	-

*10lb bag, approx 1,000 chews



PACKAGING INFORMATION

JAR WITH LID



Label Guideline Information:

- Bleedline
- Dieline
- - - - - Safety Area

Label Print Information:

Size: H: 1.643" X W: 7.443"

Lamination/Coating: Matte Lamination or (Gloss)

*Ask Sales Rep for Label Template

- Amber PET cylindrical jar with black threaded closure and tamper seal
- Batch Code Identifier

BAG WITH LABEL

- Bag information needed
- Batch Code Identifier



Label Guideline Information:

- Bleedline
- Dieline
- - - - - Safety Area

Label Print Information:

25mg Size: Coming Soon

Lamination/Coating: Coming Soon

*Ask Sales Rep for Label Template

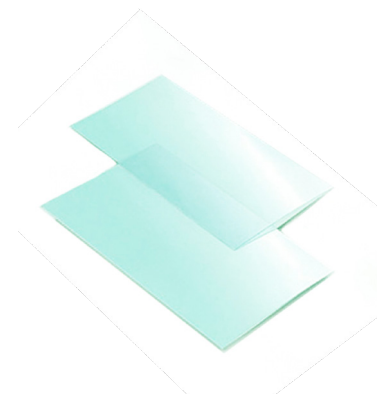


WHITE LABEL HEMP EXTRACT PET ORAL STRIPS

Our Natural CBD Oral strips are an easy and effective way to administer CBD to your pet. Simply place the strip on your pet's tongue and allow it to quickly dissolve.

Each strip contains 15mg of premium hemp extract.

Each pack contains 15 strips.



- **Strength:** 15mg per Strip
- **Active Ingredients:** Hemp Extract
- **Other Ingredients:** Sodium Carboxymethylcellulose, Microcrystalline Cellulose, Polyvinylpyrrolidone, Water, Polysorbate 80, Glycerin, Soy Lecithin, Cocoa Butter, Sucralose, Natural and Artificial Flavors, Acesulfame Potassium, Menthol, Sodium Benzoate and FD&C Blue 1.
CONTAINS SOY
- **Flavor:** Natural

- **Primary Packaging Dimensions:** 4" x 2"
- **Product Net Contents:** 15 Strips
- **Product Net Weight:** TBD
- **Product Gross Weight:** TBD
- **Master Case Dimensions:** TBD
- **Products/Master Case:** TBD
- **Master Case Gross Weight:** TBD
- **Cases/Pallet:** TBD
- **Minimum Order Quantity:** 250 Oral Strips / 15 Count

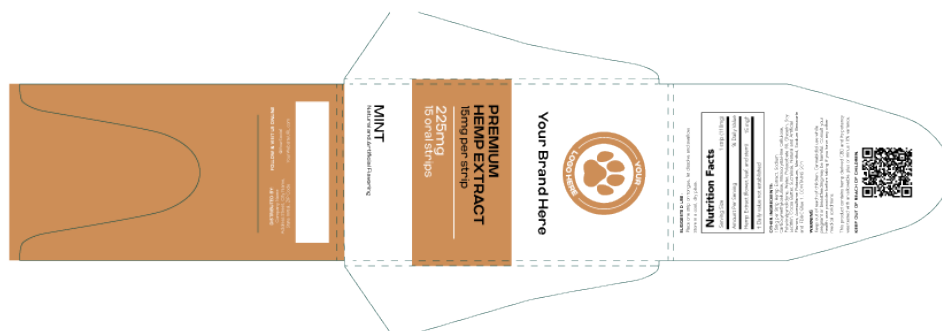
BOX INFORMATION

- Matte or Gloss Laminate Paper Box
- Individually packaged strips
- Batch Code Identifier

15MG ORAL STRIPS: 15 COUNT

MOQ	250-1,499	1,500-2,999	3,000+
T-FREE BROAD SPECTRUM	\$8.00	\$7.50	\$7.00

LABEL GUIDELINES



Label Guideline Information:

— Dieline

Label Print Information:

Size: H: 11" X W: 3.875" (Flat)

Size: H: 4" X W: 2" (Converted)

Lamination/Coating: Matte Lamination or (Gloss)

*Ask Sales Rep for Label Template



A note from our CEO

At Open Book Extracts, we want to remove any barriers that stand between you and our high-quality products and services.

- Price-Match Policy: With our high-quality ingredients and ultra-diligent customer service, we prefer to compete on dimensions other than price. We'll match the product prices of any certified cGMP processor — with an estimate, invoice, or other written proof of the quoted price from the company.
- Money-Back Guarantee: We are committed to providing you with top-quality products. Satisfaction with our products is guaranteed or we'll give you your money back.
- 24/7 Personal Customer Care: We are dedicated to serving your needs. Whether you are looking to place an order, or have questions about our products or services, our team is available to you 7 days a week — please see below for their direct contact information, and feel free to reach out anytime.



We are here to help



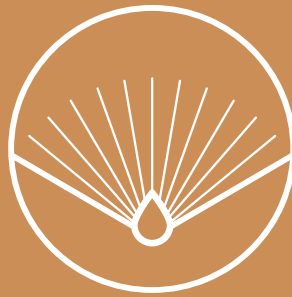
Nicole Brown

Chief Commercial Officer

nicole@openbookextracts.com

914.645.0898





OPEN BOOK EXTRACTS

© 2020 Open Book Extracts
All Rights Reserved

Open Book Extracts
317 Lucy Garrett Road
Roxboro, NC 27574
info@openbookextracts.com